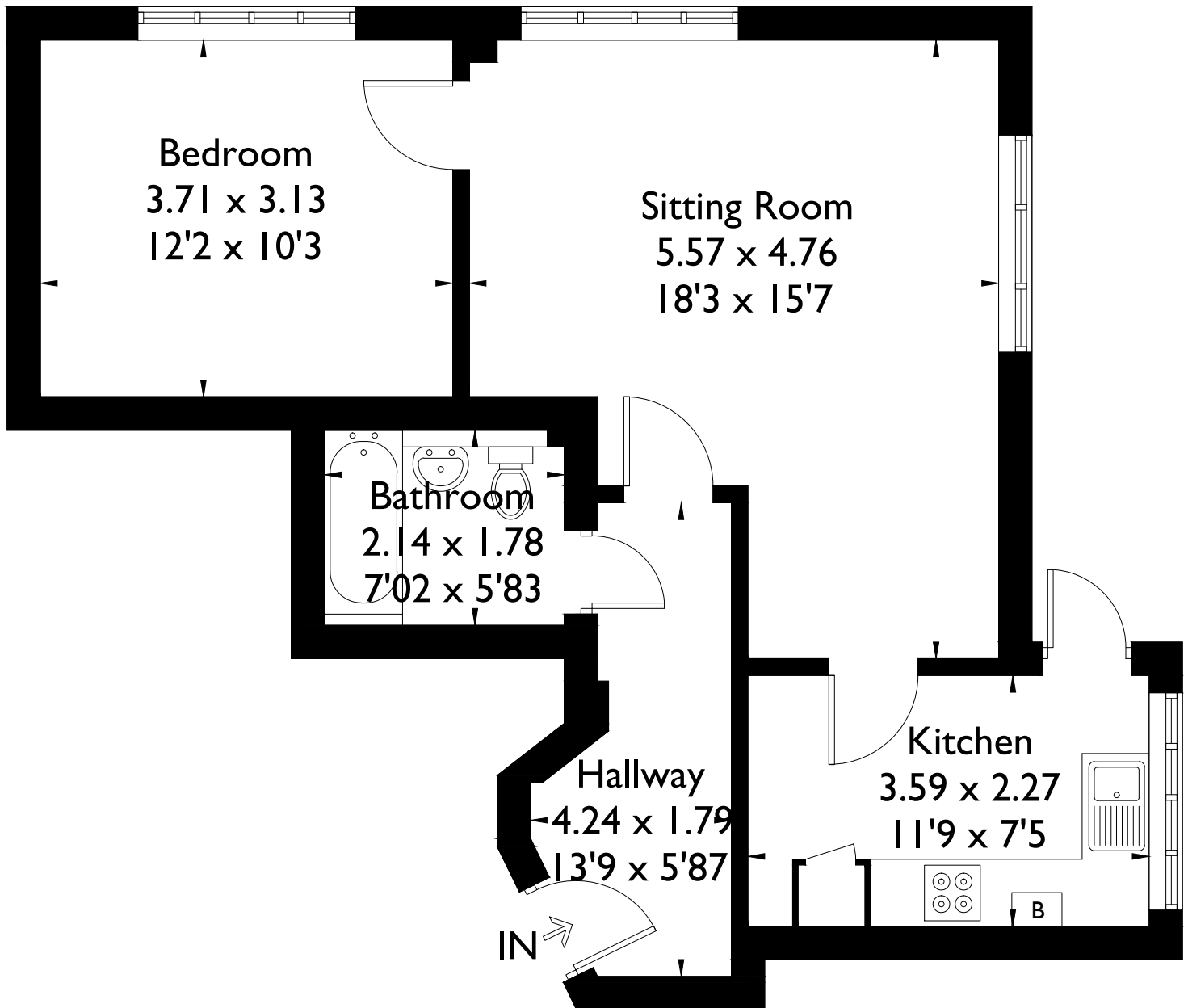


The Chartridge Suite, Maple Tree House Apartments, Weedon Hill, Hyde Heath, Amersham, HP6 5UH

Approximate Gross Internal Area = 54.2 sq m / 583 sq ft



FLOORPLANZ © 2017 0203 9056099 Ref: 189264

This plan is for layout guidance only. Drawn in accordance with RICS guidelines. Not drawn to scale unless stated. Windows & door openings are approximate. Whilst every care is taken in the preparation of this plan, please check all dimensions, shapes & compass bearings before making any decisions reliant upon them.